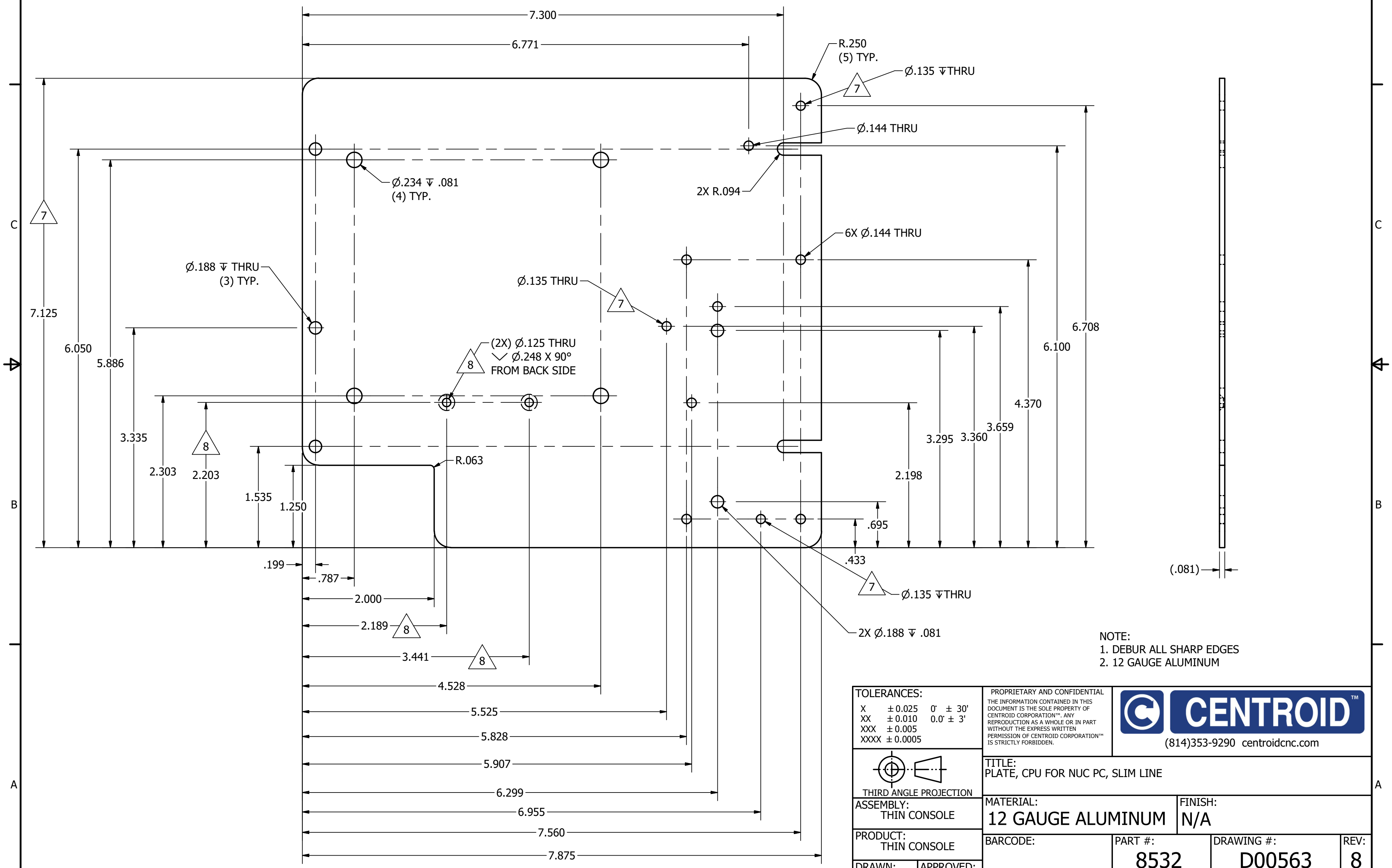

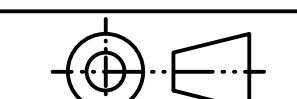


DRAWING #: **D00563**
 REV: **8**

REVISION HISTORY				
ZONE	REV	DESCRIPTION	DATE	APPROVED
	A	INITIAL RELEASE	12/10/2019	MCG
	B	ADDED 2" x 1.25" CUTOUT, INCREASED DIA OF 4.188" HOLES TO .234", RELOCATED REMAINING 188" HOLES TO ALIGN WITH MATING PANEL	1/6/2016	RPE
	C	ADDED DIA. .144 HOLE THRU	9/13/2016	RPE
	D	ADDED TWO SLOTS AND ONE .188 DIA THRU HOLES FOR MOUNTING PLATES IN CABINET	3/2/2017	
	5	UPDATED REV NUMBER TO MATCH DATABASE	7/26/2017	
	6	7.875 DIM WAS 7.500, 6.375 DIM WAS 6.250, .375 SHIFT IN BOLT HOLE PATTERN, ELONGATED SLOTS	3/1/2018	
SHT1:C4, D2,C2,B2	7	ADDED .375 OF MATERIAL TO THE TOP OF PART, ADDED 3 HOLES .135 DIA	12/16/2019	MCG
	8	ADDED TWO .125 THRU HOLES WITH COUNTERSINK.	3/19/2024	MCG



NOTE:
 1. DEBUR ALL SHARP EDGES
 2. 12 GAUGE ALUMINUM

TOLERANCES: X ± 0.025 0' ± 30' XX ± 0.010 0.0' ± 3' XXX ± 0.005 XXXX ± 0.0005		PROPRIETARY AND CONFIDENTIAL THE INFORMATION CONTAINED IN THIS DOCUMENT IS THE SOLE PROPERTY OF CENTROID CORPORATION™. ANY REPRODUCTION AS A WHOLE OR IN PART WITHOUT THE EXPRESS WRITTEN PERMISSION OF CENTROID CORPORATION™ IS STRICTLY FORBIDDEN.		 (814)353-9290 centroidcnc.com	
 THIRD ANGLE PROJECTION		TITLE: PLATE, CPU FOR NUC PC, SLIM LINE			
ASSEMBLY: THIN CONSOLE		MATERIAL: 12 GAUGE ALUMINUM		FINISH: N/A	
PRODUCT: THIN CONSOLE		BARCODE:	PART #: 8532	DRAWING #: D00563	REV: 8
DRAWN:	APPROVED:	SIZE: C	WEIGHT: N/A	SCALE: 1:1	SHEET #: 1 OF 1